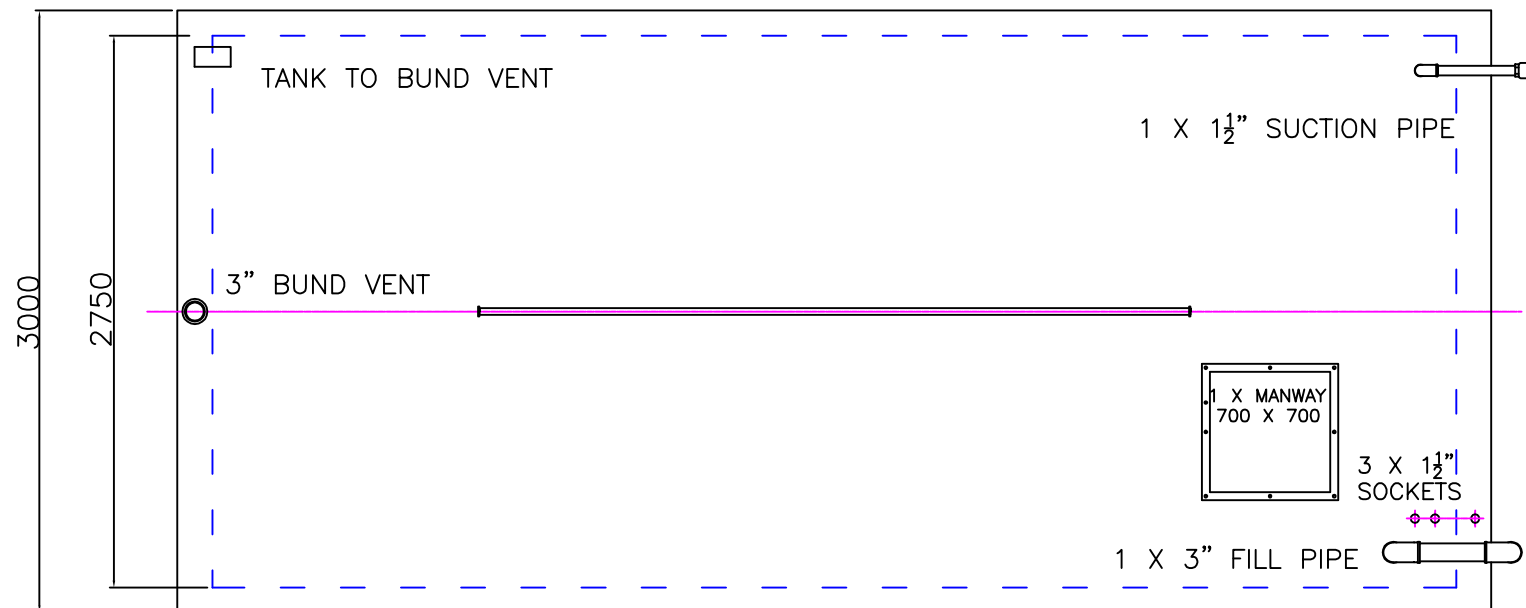
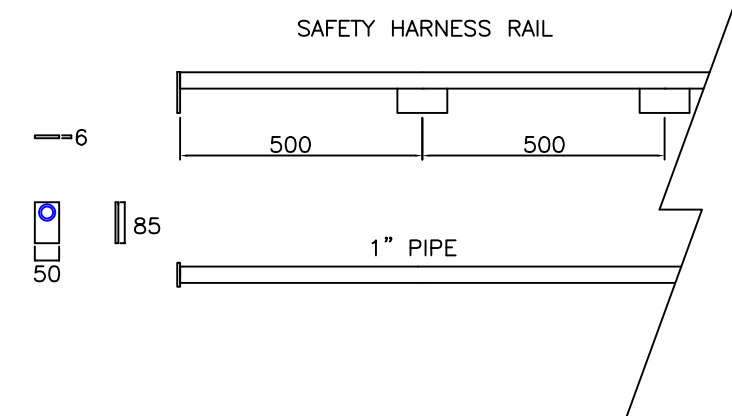
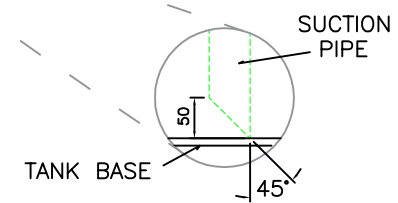


3550 APPROX INCLUDING PIPE WORK & RUNNERS



EXTERNAL TANK DIMENSIONS: mm
 6550 LONG
 3000 WIDE
 3050 + PIPEWORK, RUNNERS = 3550 HIGH APPROX
 INTERNAL TANK DIMENSIONS
 6200 LONG
 2750 WIDE
 3050 HIGH



© COPYRIGHT 2009
 THIS DRAWING AND DESIGN IS THE PROPERTY OF: SIMON ENGINEERING.
 IT IS CONFIDENTIAL AND MUST NOT BE LOANED, COPIED OR OTHERWISE COMMUNICATED TO A THIRD PARTY WITHOUT PERMISSION AND IS THE SUBJECT OF A RECALL AT ANY TIME

SIMON ENGINEERING,
 SIXTH AVENUE,
 FLIXBOROUGH INDUSTRIAL ESTATE,
 FLIXBOROUGH,
 SCUNTHORPE,
 NORTH LINCOLNSHIRE.
 DN15 8SH.
 TELEPHONE: 01724 282937
 FAX: 01724 278811



MATERIAL: S275		DESCRIPTION		No.	TITLE
STANDARD TOLERANCES + 100mm / - 100mm				0	50,000 LITRE FUEL STORAGE TANK
SCALE NTS					
DRAWN					
DATE					
ISSUED	SIGNED	PASSED	DATE		
					(CAD.FILE: SE50K-NO CAB)
					DRG. No.
					SE50K-NO CAB